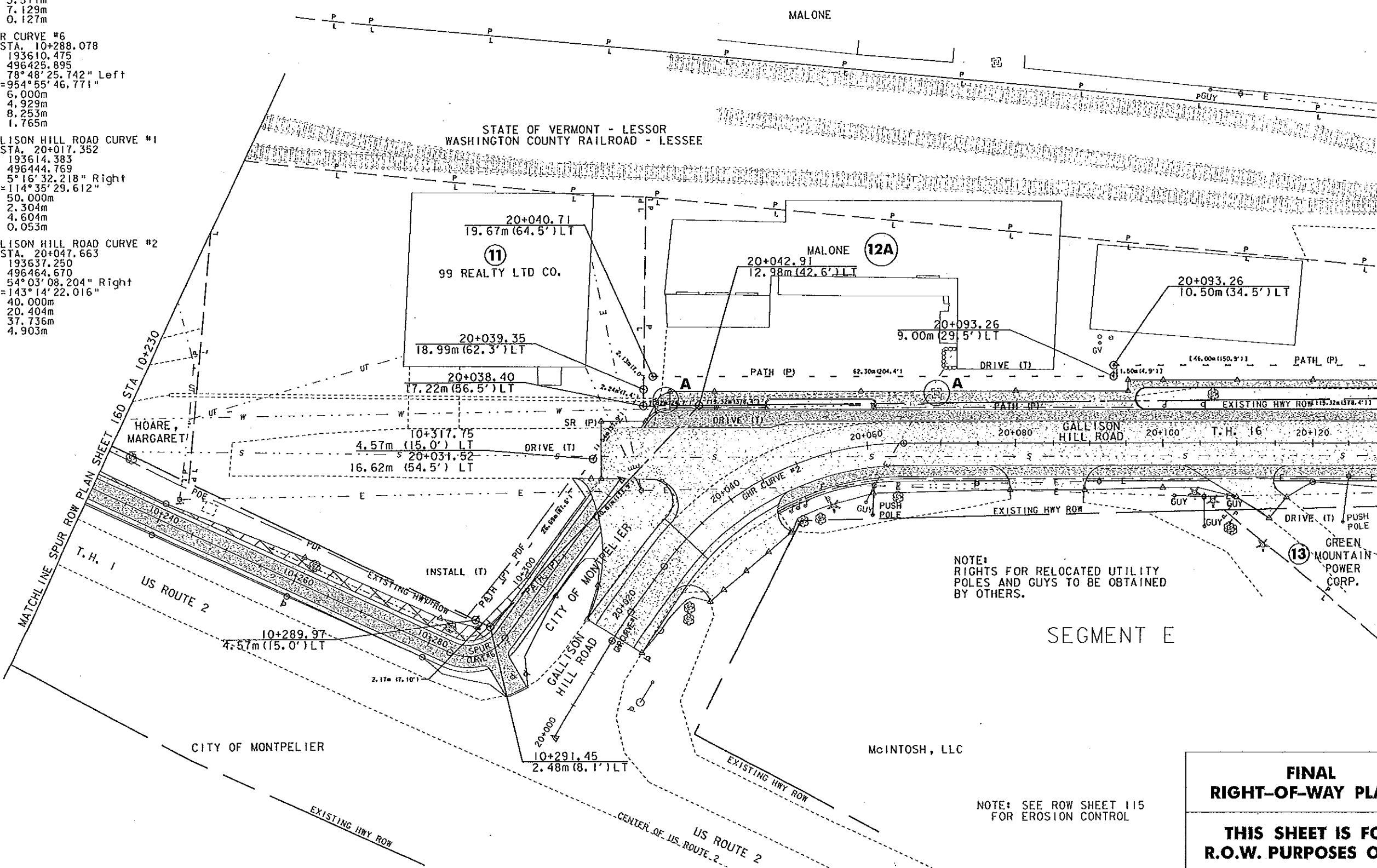
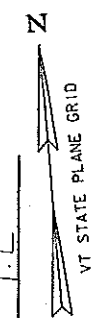


SPUR CURVE #5
 PI STA. 10+211.662
 N = 193648.391
 E = 496359.535
 Δ = 8° 10' 11.116" Left
 Dc = 114° 35' 29.612"
 R = 50.000m
 T = 3.571m
 L = 7.129m
 E = 0.127m

SPUR CURVE #6
 PI STA. 10+288.078
 N = 193610.475
 E = 496425.895
 Δ = 78° 48' 25.742" Left
 Dc = 954° 55' 46.771"
 R = 6.000m
 T = 4.929m
 L = 8.253m
 E = 1.765m

GALLISON HILL ROAD CURVE #1
 PI STA. 20+017.352
 N = 193614.383
 E = 496444.769
 Δ = 5° 16' 32.218" Right
 Dc = 114° 35' 29.612"
 R = 50.000m
 T = 2.304m
 L = 4.604m
 E = 0.053m

GALLISON HILL ROAD CURVE #2
 PI STA. 20+047.663
 N = 193637.250
 E = 496464.670
 Δ = 54° 03' 08.204" Right
 Dc = 143° 14' 22.016"
 R = 40.000m
 T = 20.404m
 L = 37.736m
 E = 4.903m



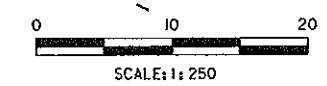
NOTE:
 RIGHTS FOR RELOCATED UTILITY
 POLES AND GUYS TO BE OBTAINED
 BY OTHERS.

SEGMENT E

NOTE: SEE ROW SHEET 115
 FOR EROSION CONTROL

**FINAL
 RIGHT-OF-WAY PLANS**

**THIS SHEET IS FOR
 R.O.W. PURPOSES ONLY**



PLOTTED 7/23/2009

NO.	DATE	REVISIONS	BY	CHKD

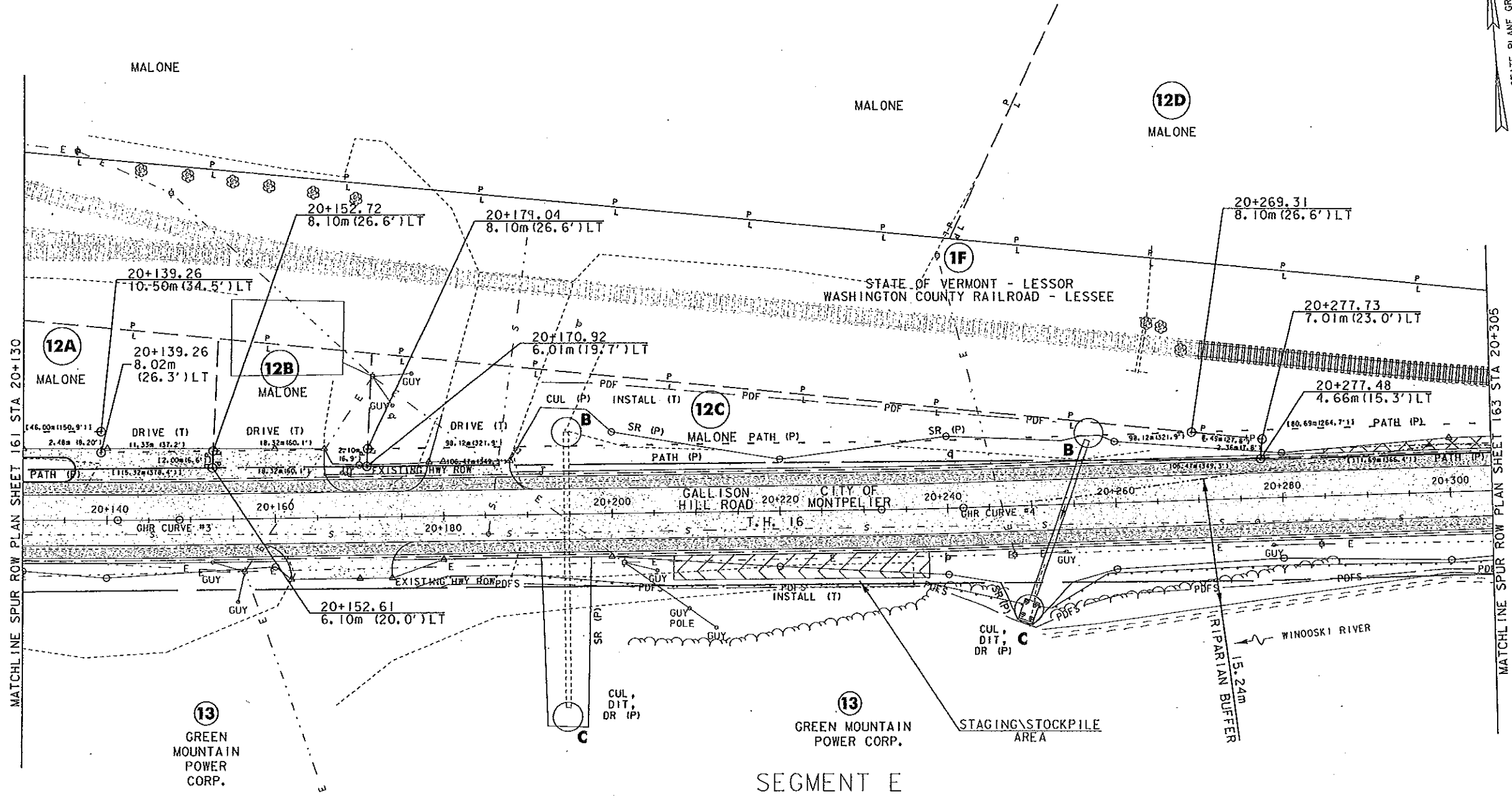
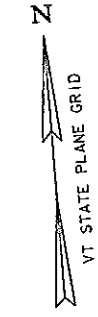
DuBois & King Inc.
 engineering planning management development

CITY OF MONTPELIER &
 TOWN OF BERLIN
 MONTPELIER & BERLIN, VERMONT
 MONTPELIER - BERLIN BIKE PATH
 STP BIKE (33) S
 SPUR RIGHT OF WAY PLAN SHEET
 SHEET 161 OF 163

DRAWN BY PGJ	DATE JULY 2009
CHECKED BY	PROJ. NO. B15804
PROJ. ENG.	DRAW. NO.
SHEET 50 OF 261	

GALLISON HILL ROAD CURVE #3
 PI STA. 20+144.975
 N = 193628.353
 E = 496564.660
 A = 0°50'56.905" Left
 Dc = 11°27'32.961"
 R = 500.000m
 T = 3.705m
 L = 7.410m
 E = 0.014m

GALLISON HILL ROAD CURVE #4
 PI STA. 20+236.966
 N = 193621.558
 E = 496656.400
 A = 1°07'16.332" Left
 Dc = 11°27'32.961"
 R = 500.000m
 T = 4.892m
 L = 9.784m
 E = 0.024m



MATCHLINE SPUR ROW PLAN SHEET 161 STA 20+130

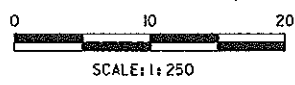
MATCHLINE SPUR ROW PLAN SHEET 163 STA 20+305

SEGMENT E

NOTE: SEE ROW SHEET 116 FOR EROSION CONTROL

**FINAL
 RIGHT-OF-WAY PLANS**

**THIS SHEET IS FOR
 R.O.W. PURPOSES ONLY**



PLOTTED 7/23/2009

NO.	DATE	REVISIONS	BY	ICD

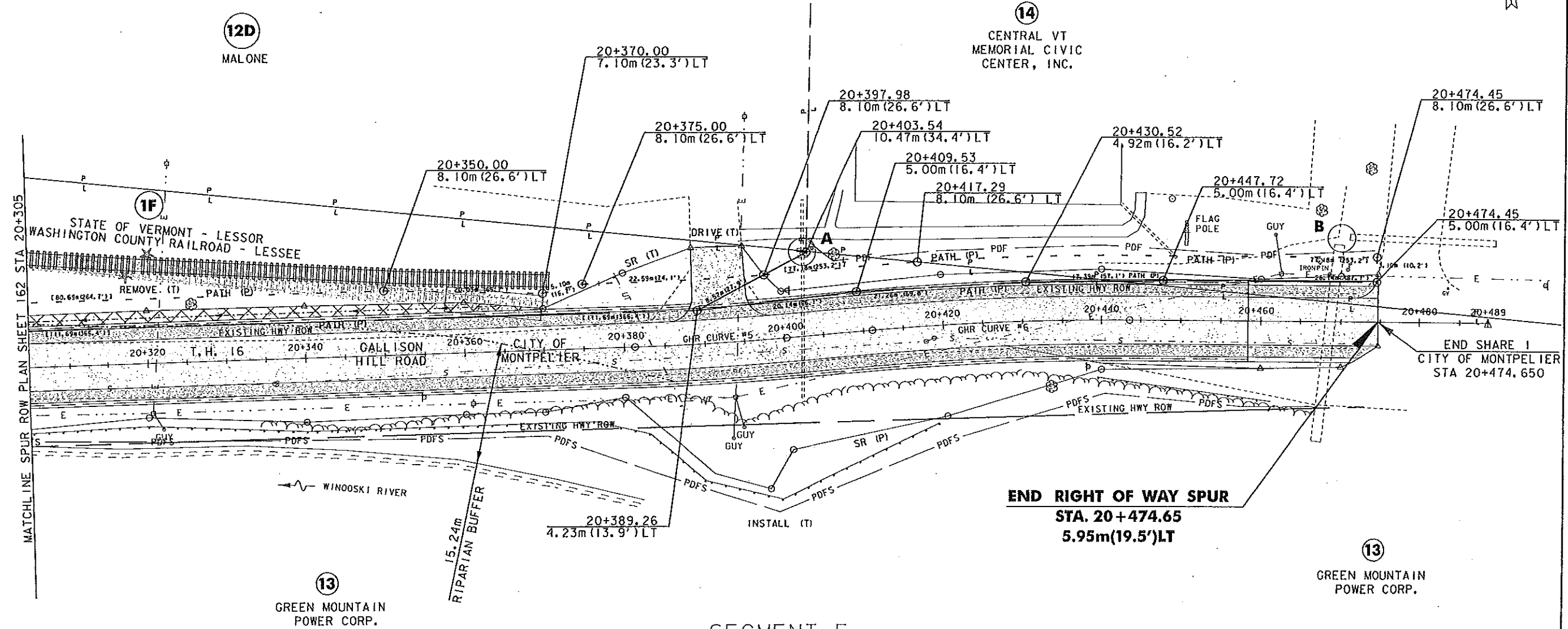
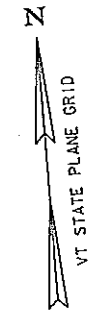
DuBois & King
 INC.

engineering planning management development

CITY OF MONTPELIER &
 TOWN OF BERLIN
 MONTPELIER & BERLIN, VERMONT

MONTPELIER - BERLIN BIKE PATH
 STP BIKE (33) S
 SPUR RIGHT OF WAY PLAN SHEET
 SHEET 162 OF 163

DRAWN BY PGJ	DATE JULY 2009
CHECKED BY	PROJ. NO. B15804
PROJ. ENG.	DRAW. NO.
SHEET 51 OF 261	



12D
MAL ONE

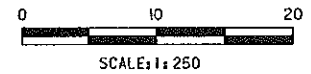
14
CENTRAL VT
MEMORIAL CIVIC
CENTER, INC.

13
GREEN MOUNTAIN
POWER CORP.

13
GREEN MOUNTAIN
POWER CORP.

- EROSION CONTROL LEGEND**
- NOTE: SEE EROSION CONTROL DETAIL SHEETS FOR DETAILS.
- A = DROP INLET PROTECTION
 - B = PIPE INLET CONTROL
 - C = PIPE OUTLET CONTROL
 - PDF = PROJECT DEMARCATION FENCE
 - PDFS = PROJECT DEMARCATION FENCE - SNOW
 - SILT FENCE
 - STONE CHECK DAMS
 - EROSION MATTING

NOTE: SEE ROW SHEET 117 FOR EROSION CONTROL



SEGMENT E

**FINAL
RIGHT-OF-WAY PLANS**

**THIS SHEET IS FOR
R.O.W. PURPOSES ONLY**

GALLISON HILL ROAD CURVE #5
 PI STA. 20+390.783
 N = 193613.201
 E = 496809.990
 A = 3°06'29.644" Left
 Dc = 16°22'12.802"
 R = 350.000m
 T = 9.496m
 L = 18.987m
 E = 0.129m

GALLISON HILL ROAD CURVE #6
 PI STA. 20+427.366
 N = 193613.197
 E = 496846.577
 A = 5°18'47.246" Right
 Dc = 16°22'12.802"
 R = 350.000m
 T = 16.240m
 L = 32.456m
 E = 0.377m

NO.	DATE	REVISIONS	BY	CHKD

DuBois & King inc.

engineering planning management development

CITY OF MONTPELIER & TOWN OF BERLIN
 MONTPELIER & BERLIN, VERMONT
 MONTPELIER - BERLIN BIKE PATH STP BIKE (33) S
 SPUR RIGHT OF WAY PLAN SHEET SHEET 163 OF 163

DRAWN BY PGJ	DATE JULY 2009
CHECKED BY 	PROJ. NO. B15804
PROJ. ENG. 	DRAW. NO.
SHEET 52 OF 261	

7/23/2009